

Session Name: EGP 3-31-2015 10-49 AM

Date Created: 3/31/2015 8:31:33 AM

Active Participants: 68 of 68

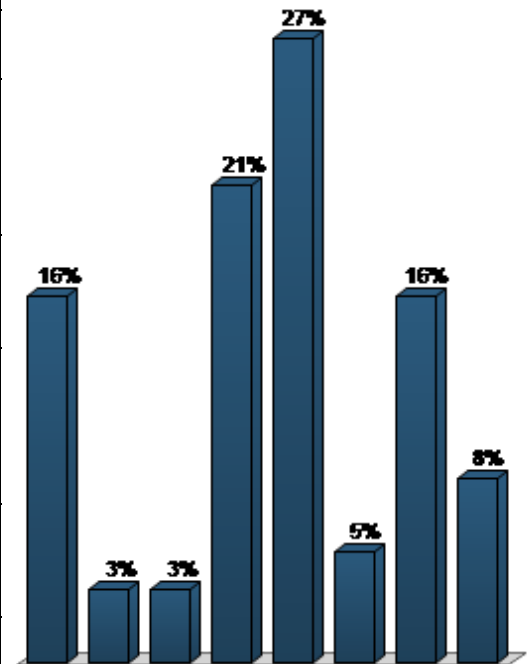
Average Score: 0.00%

Questions: 8

Results by Question

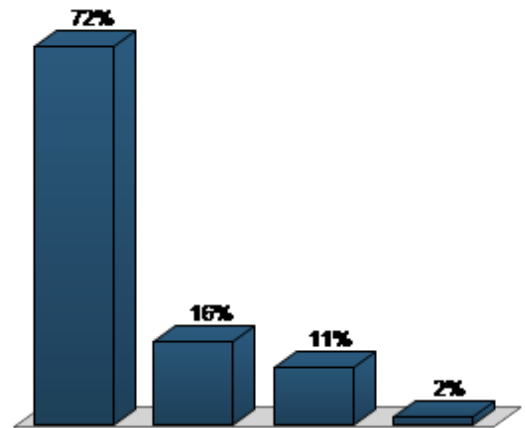
1. Which best describes your role today? (Demographic Assignment)

	Responses	
	Percent	Count
Local elected official	16.13%	10
State/federal government	3.23%	2
Business person	3.23%	2
Economic development agency or chamber or commerce staff	20.97%	13
Other local government or regional agency staff	27.42%	17
Educational institution (university, community college, K12)	4.84%	3
Civic/religious/philanthropic organization	16.13%	10
Other	8.06%	5
Totals	100%	62



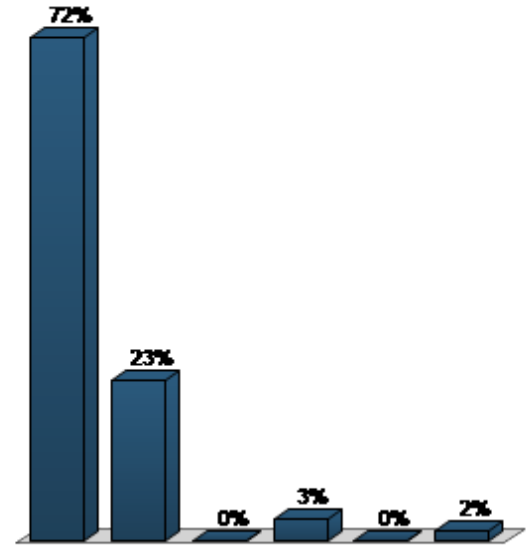
2. Which place do you consider “home?” (Demographic Assignment)

Responses		
	Percent	Count
“Core” County: Wake, Durham, Orange	71.88%	46
Other “Region J” county: Johnston, Chatham, Lee, Moore	15.62%	10
“Region K” county: Franklin, Granville, Person, Vance, Warren	10.94%	7
Other	1.56%	1
Totals	100%	64



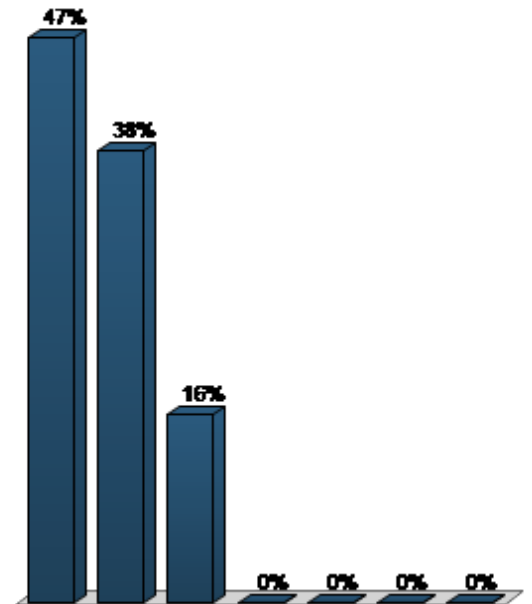
3. How would you describe your race/ethnicity? (Demographic Assignment)

Responses		
	Percent	Count
White	72.31%	47
Black	23.08%	15
Latino	0%	0
Asian/Pacific Islander	3.08%	2
Native American	0%	0
Mixed race or other	1.54%	1
Totals	100%	65



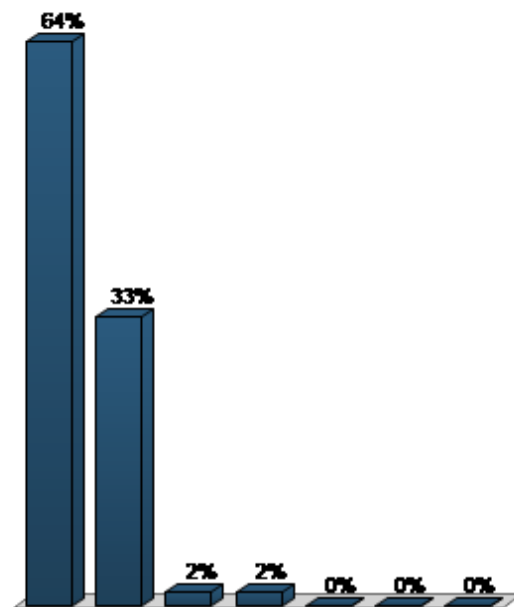
4. The 13-County Research Triangle Region faces a major demographic shift (Multiple Choice)

Responses		
	Percent	Count
Strongly Agree	46.88%	30
Agree	37.5%	24
Somewhat Agree	15.62%	10
Neutral	0%	0
Somewhat Disagree	0%	0
Disagree	0%	0
Strongly Disagree	0%	0
Totals	100%	64



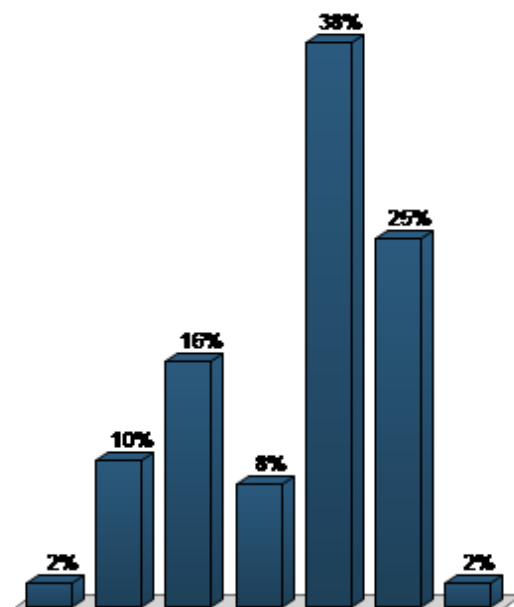
5. More equitable racial and geographic inclusion is important for future prosperity (Multiple Choice)

Responses		
	Percent	Count
Strongly Agree	64.06%	41
Agree	32.81%	21
Somewhat Agree	1.56%	1
Neutral	1.56%	1
Somewhat Disagree	0%	0
Disagree	0%	0
Strongly Disagree	0%	0
Totals	100%	64



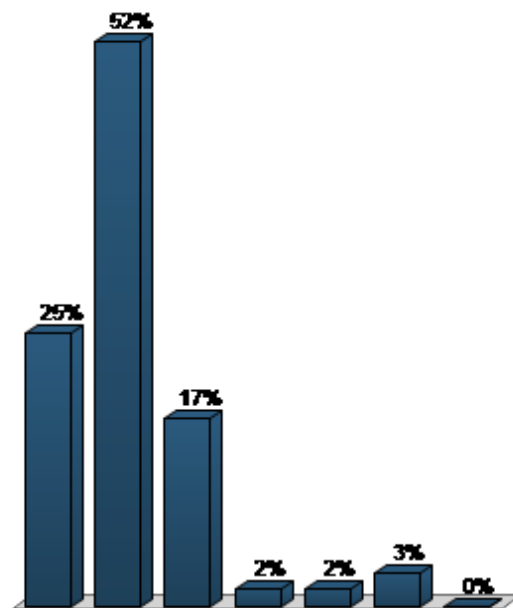
6. Our region is well-prepared for the demographic transformation we are facing (Multiple Choice)

Responses		
	Percent	Count
Strongly Agree	1.64%	1
Agree	9.84%	6
Somewhat Agree	16.39%	10
Neutral	8.2%	5
Somewhat Disagree	37.7%	23
Disagree	24.59%	15
Strongly Disagree	1.64%	1
Totals	100%	61



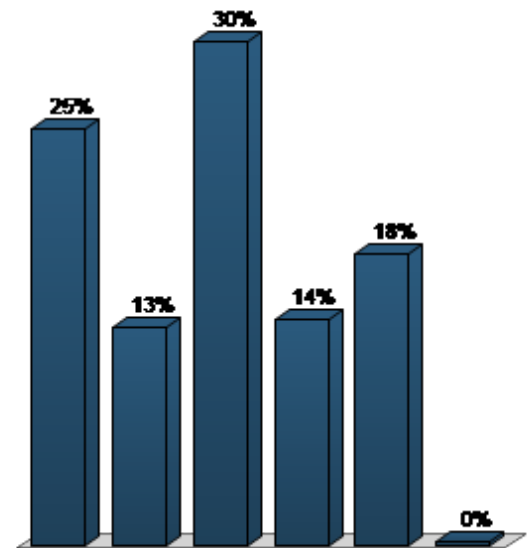
7. Prior to this event, I was knowledgeable about our region’s changing demographics (Multiple Choice)

Responses		
	Percent	Count
Strongly Agree	25%	16
Agree	51.56%	33
Somewhat Agree	17.19%	11
Neutral	1.56%	1
Somewhat Disagree	1.56%	1
Disagree	3.12%	2
Strongly Disagree	0%	0
Totals	100%	64



8. To encourage future prosperity “we” should do more to: (Priority Ranking)

Responses	
Percent	Weighted Count
Assist workers facing barriers to employment (e.g. low education, arrest record)	25.08% 448
Raise incomes and build wealth/savings of lower income households	13.1% 234
Strengthen education and career pathways for youth	30.35% 542
Build bridges across the racial generation gap	13.66% 244
Promote diversity in civic participation and leadership	17.58% 314
[none of the above]	0.22% 4
Totals	100% 1786



For this question, respondents voted in order on which activity was top priority, 2nd priority, etc. Top priority was scored 10 points, 2nd priority 8 points, then 6, 4 and 2 points if all 5 choices were scored. Respondents could choose to select fewer than all 5. If a respondent thought none of the activities should be pursued, (s)he was instructed to choose [none of the above] which would then receive 10 points. Since this last option received 4 points, it appears that one respondent selected 3 other priorities as top 3 priorities, then chose [none of the above] as the fourth priority (or, alternatively, two respondents selected [none of the above] as a fifth priority).