

A Regional Data Snapshot

Triangle J Council of Governments

March 2011

Edition 1

•••

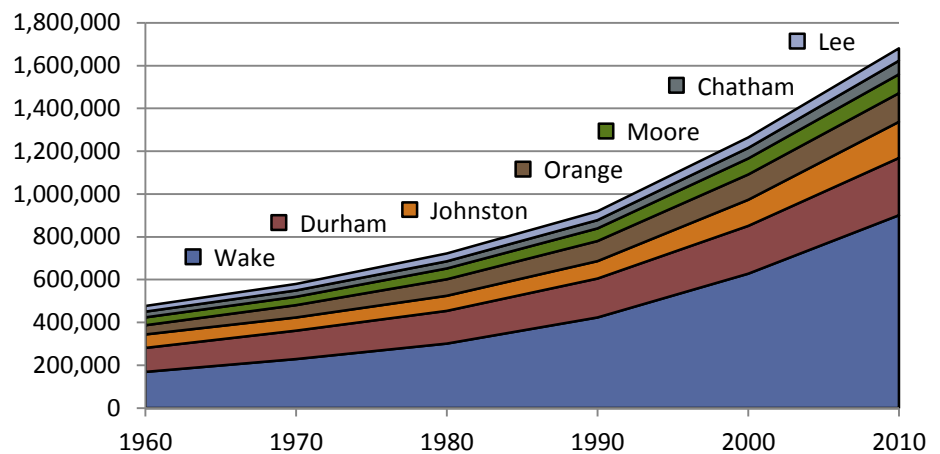
In February, 2011, the United States Census Bureau released the data collected from the 2010 Census in North Carolina. The initial data release includes information on population and race breakdowns as well as housing units and occupancy rates.

This document provides summary level totals from the data released for the seven counties in the Triangle J Region: Chatham, Durham, Johnston, Lee, Moore, Orange, and Wake.

In general, the 2010 totals show that the Triangle Region experienced a tremendous amount of growth—having increased from 479,022 in 1960 to almost 1.7 million in 2010. The growth rate of the region also continues to rise. Just in the last ten years, the counties in Region J grew by 416,387 people – a 32.9% increase from the population in 2000.

A Summary of Facts from the Initial 2010 Census Release for the Triangle J Region

Population Trends - past 50 years



In the last ten years alone, 416,387 more people made the Triangle Region their home—nearly equal the total number of people who lived in the region in 1960.

Population Growth by County

	2000	2010	Total Increase	Percentage Increase
Wake	627,846	900,993	273,147	43.5%
Durham	223,314	267,587	44,273	19.8%
Johnston	121,965	168,878	46,913	38.5%
Orange	118,227	133,801	15,574	13.2%
Moore	74,769	88,247	13,478	18.0%
Chatham	49,329	63,505	14,176	28.7%
Lee	49,040	57,866	8,826	18.0%
Regional Totals	1,264,490	1,680,877	416,387	32.9%

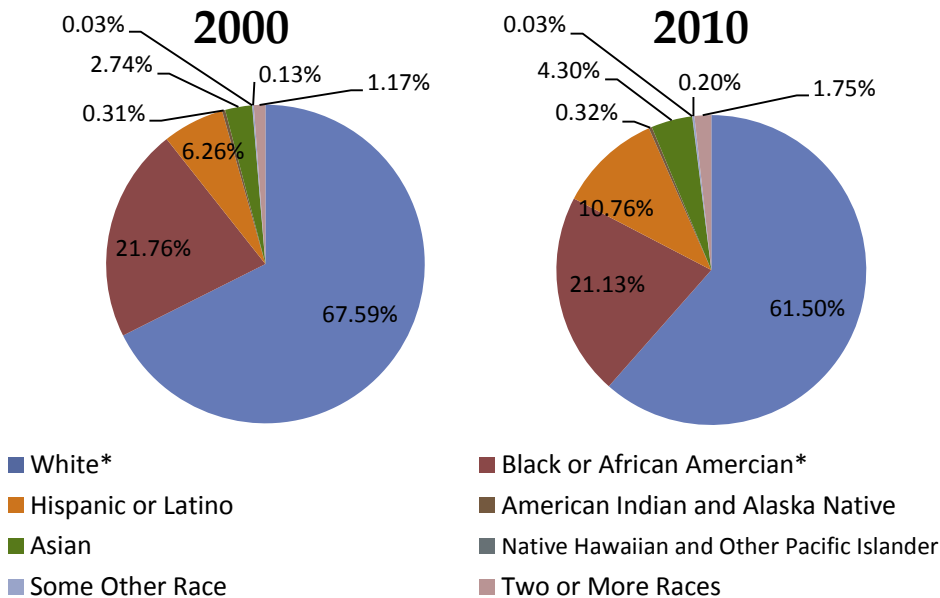
Regional Demographics

Regional Population by Race

	2000	2010	Total Increase	Percentage Increase
White*	854,690	1,033,766	179,076	21.0%
Black or African American*	275,174	355,225	80,051	29.1%
Hispanic or Latino	79,176	180,895	101,719	128.5%
Asian	34,623	72,344	37,721	108.9%
American Indian and Alaska native alone	3,981	5,436	1,455	36.5%
Native Hawaiian and Other Pacific Islander	346	573	227	65.6%
Some Other Race	1,679	3,304	1,625	96.8%
Two or More Races	14,821	29,334	14,513	97.9%
Regional Totals	1,264,490	1,680,877	416,387	32.9%

* Among those who do not also identify as Hispanic or Latino

Regional Demographics by Percentage



By far, the largest growth in the region occurred in Wake County, which grew by 43.5%, making it the second largest county in the state. Johnston County's population also increased substantially--in both absolute numbers as well as in percentage increase. While every county posted a net growth in population, Orange County showed the smallest percentage increase at 13.2%.

As the region's population continues to grow, the demographics also continue to change. 2010 numbers show a notable increase in the number of minorities living in the Triangle Region.

In the last ten years, the number of people who identify as Hispanic or Latino and Asian increased dramatically. Since 2000, both groups have increased in relative population in every county in the region.

Lee, Durham, and Johnston counties experienced the highest Hispanic or Latino growth rate with rates between 5 - 6%. Orange, Wake, and Durham counties had the highest increase of people who identify as Asian.

The Triangle J region has experienced substantial demographic shifts over the past 10 years. Minority populations, particularly those who identify as Hispanics or Latinos and Asians, increased in all seven counties.

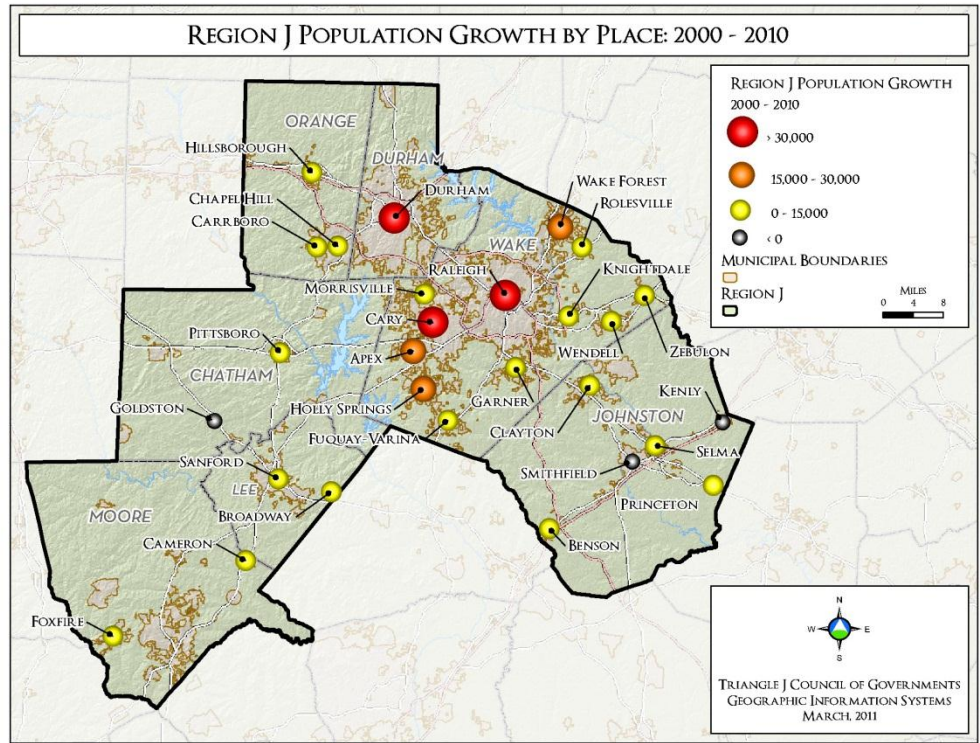
•••

As noted previously, Wake County experienced the largest population growth in the Triangle region this past decade. While the city of Raleigh experienced the largest total gain—increasing by 127,799 people—other places in Wake County — most notably Rolesville, Morrisville, Wake Forest, Holly Springs, and Fuquay Varina—grew at a very rapid pace.

Since 2000, the cities of Durham and Cary both grew by over 40,000 people, though Cary’s growth rate was almost double that of the city of Durham. Apex and Wake Forest both increased by close to 18,000 people, while Holly Springs grew by just over 15,000.

The growth in the town of Clayton accounted for the majority of the growth seen in Johnston County. Cameron and Foxfire Village, though they remain the two smallest places in Moore County, with 285 and 902 people respectively, had two of the most dramatic growth rates of all places in Moore County.

Population Growth By Place



The largest growth was in Raleigh, which grew by 127,799 people. Durham added 41,295 and Cary added 40,698.

Population Growth Rate by Place

Wake	
Apex	85.4%
Cary	43.1%
Fuquay-Varina	127.1%
Garner	45.0%
Holly Springs	168.3%
Knightdale	91.4%
Morrisville	256.7%
Raleigh	46.3%
Rolesville	317.4%
Wake Forest	139.3%
Wendell	37.6%
Zebulon	9.6%

Durham	
Durham	22.1%

Johnston	
Benson	13.3%
Clayton	131.1%
Kenly	-14.7%
Princeton	12.0%
Selma	2.7%
Smithfield	-4.7%

Chatham	
Goldston	-16.0%
Pittsboro	68.1%

Orange	
Carrboro	16.7%
Chapel Hill	17.5%
Hillsborough	11.8%

Moore	
Cameron	88.7%
Foxfire	90.3%

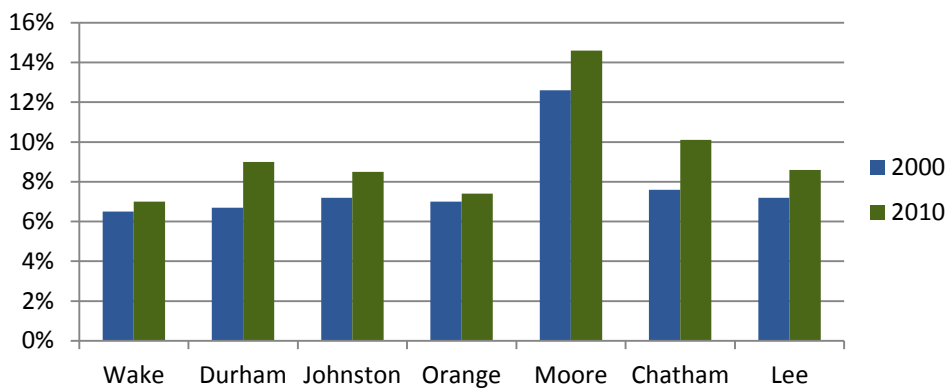
Lee	
Broadway	21.1%
Sanford	21.0%

Housing by Place and County

2010 Housing Units by County

	Total Units	Total Change 2000-2010	Percent Change 2000-2010
Wake	371,836	112,883	43.6%
Durham	120,217	24,765	25.9%
Johnston	67,682	17,486	34.8%
Orange	55,597	6,308	12.8%
Moore	43,940	8,789	25.0%
Chatham	28,753	7,395	34.6%
Lee	24,136	4,227	21.2%
Regional Totals	712,161	181,853	34.3%

Vacancy Rates by County



Housing Unit Growth Rate by Place

Wake	
Apex	73.4%
Cary	50.0%
Fuquay-Varina	117.0%
Garner	51.6%
Holly Springs	137.7%
Knightdale	100.8%
Morrisville	160.3%
Raleigh	45.9%
Rolesville	249.2%
Wake Forest	123.3%
Wendell	36.1%
Zebulon	12.1%

Durham	
Durham	27.8%

Johnston	
Benson	13.9%
Clayton	121.2%
Kenly	-6.8%
Princeton	8.8%
Selma	3.0%
Smithfield	3.4%

Chatham	
Goldston	1.4%
Pittsboro	71.0%

Orange	
Carrboro	12.8%
Chapel Hill	17.3%
Hillsborough	11.3%

Moore	
Cameron	89.7%
Foxfire	61.4%

Lee	
Broadway	28.4%
Sanford	23.7%

Overall, the seven-county region increased its housing stock by 712,161 units, at a growth rate of 34.3%.

The growth in the region's housing stock grew largely according to population growth at both the county and the place level. Like population, the housing stock in Wake County grew the most in the region—increasing just as the population did with a 43.6% increase. Orange County, on the other hand had the least increase in housing stock, with a growth rate of only 12.8%.

In general, vacancy rates increased only slightly in every county in the region. Even Chatham County, which experienced the largest percentage increase in vacancy, only had vacancy rates increase by 2.5%. Given the recent dip in the housing market, these numbers, combined with the substantial population growth over the last 10 years, are positive signs of sustained growth across the Triangle Region.

